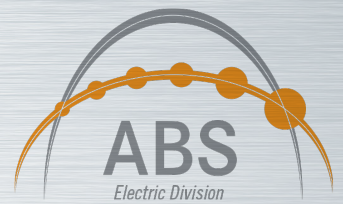


# Newsletter

Atlantic Bearing Services - Electric Division

October 2017



## Storm Deployment after Irma



Our Electric department, ABS Electric, is currently involved in the State-wide Storm Hardening Project with Florida Power & Light FPL. The purpose of this project is to upgrade the FPL's electric grid to meet new standards so that it can sustain storms like the one we just had last week.

Our ABS Electric team has partially suspended its design activities and is now out on the field, helping restore power to the most affected areas in Florida.

FPL's massive restoration effort after Hurricane Irma is underway with a record workforce of nearly 19,500 responding to the largest number of outages in the company's history.

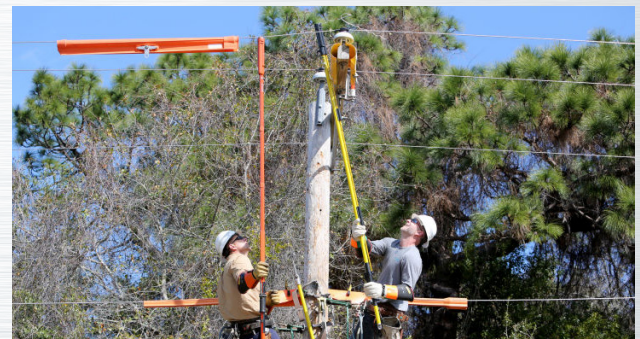
- In total, FPL estimates more than 5 million outages caused by Irma, which includes customers who may have experienced more than one outage
- Of the 4.4 million customers impacted, 1.1 million already had their service restored.
- Largest restoration workforce in U.S. history responding to outages; nearly 30 staging sites activated with restoration crews, trucks and equipment from across the U.S. and Canada. Hurricane Irma is unprecedented by almost every measure.
- "Due to its size, destructive power and slow movement speed. All 27,000 square miles and 35 counties of our service territory have been impacted by this devastating storm" said Eric Silagy, president and CEO of FPL.

### ABS Electric Storm Deployment

After Irma's pass throughout West Coast Florida, FPL instructed to us to report to the deployment location in Stuart FPL Services Center Martin county on September 12th 2017.

### ABS Electric Division Crew

- Extendo team (4 members)
- Storm Patrolling team (4 members)d
- Working 10 days up to 15 hours per day doing feeders and laterals rapid patrol, advanced lateral patrolling, priority feeder sweeps, field ticket completion reports, expedite tickets with line crews and Extendo work for fuse power restorations.



### Locations restoration works

- Vero Beach
- Okeechobee
- Port St Lucie
- Daytona Beach
- Fort Pierce
- Fort Myers
- Sebastian
- Treasure Coast

### Locations IRMA Deployment Centers

- Okeechobee Center: 825 NE 34th Ave, Okeechobee, FL 34974
- Stuart Service Center: 4406 SW Cargo Way, Palm City, FL
- Fort Myer: Lee Civic Center 11831 Bayshore Rd, North Fort Myers, FL 33917
- Daytona Beach: 330 Hand Avenue, Ormond Beach, FL 32115

Atlantic Bearing Services  
Electric Division

7910 NW 25 st. Suite 201 Doral, FL 33122  
+1.305.592.4404 ph



www.iqengineering.net  
www.ryasa.com.mx